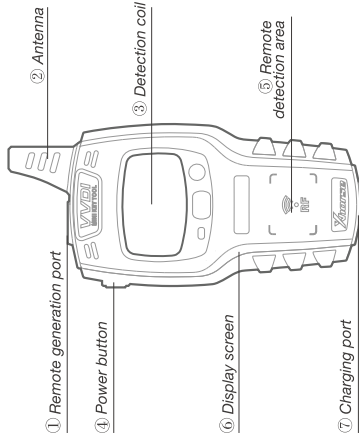




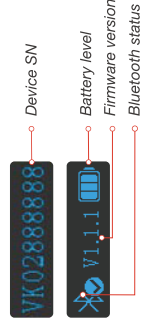
MINI KEYTOOL

User Manual

Overview



— 02 —



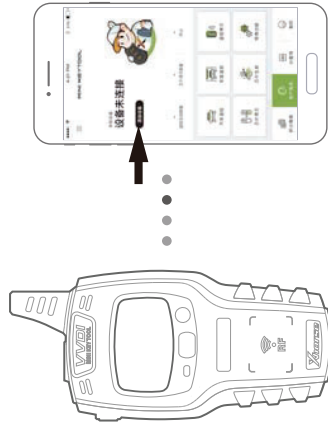
[Start]: press and hold the power button for 1 second
 [Shut down]: press and hold the power button for 4 seconds

— 03 —



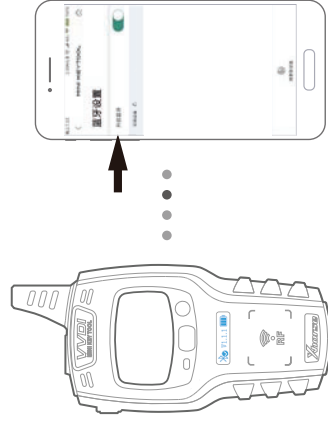
[Transponder detection]: press the power button for 1 second
 [Frequency test]: press and hold the power button for 2 seconds

— 04 —



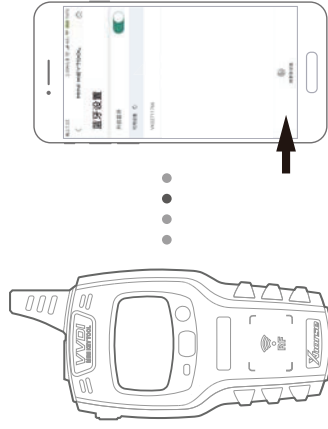
1. Enter the main interface of APP and click "add device" to connect

— 05 —



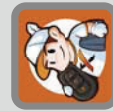
2. The bluetooth of the cellphone is required to be turned on

— 06 —



3. Click "search for new device" and pair the device according to SN

— 07 —



Xhorse

Xhorse



DOWNLOADABLE FROM GOOGLE PLAY AND APPLE APP STORE



AUTOMOTIVE KEY EXPERT