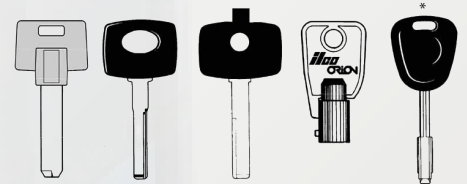


RST MUSTANG - DIMPLE/LASER KEY MACHINE

Designed to cut a wide range of keys including laser, dimple and tubular keys.

The RST Mustang is one of the most versatile laser key machines on the market. It's unique tilting clamps allows for duplication of a wide range of keys including laser, dimple, Yale Superior and tubular keys.



Main Benefits and Features:

- Highly versatile machine.
- Duplicates almost all laser and dimple keys.
- Synchronised tilting vices for angled cuts.
- Easy and smooth dual handle operation.
- High precision / accuracy.
- Variable speed motor.
- Intelligent cross plate control with cross plate lock.
- Multi-lock, Mercedes and Tubular adapters included as standard.
- Dual Handle operation.
- Light & tray for drill bits and accessories.
- Optional Tibbe key adapter.
- Durable and long lasting machine.
- One year warranty.

Technical Specifications

- Weight: 25kg.
- Dimensions: 300x300x450mm.
- UK 3 Pin Plug.
- Voltage: 220/240v.
- CE Certified.



MCM1006